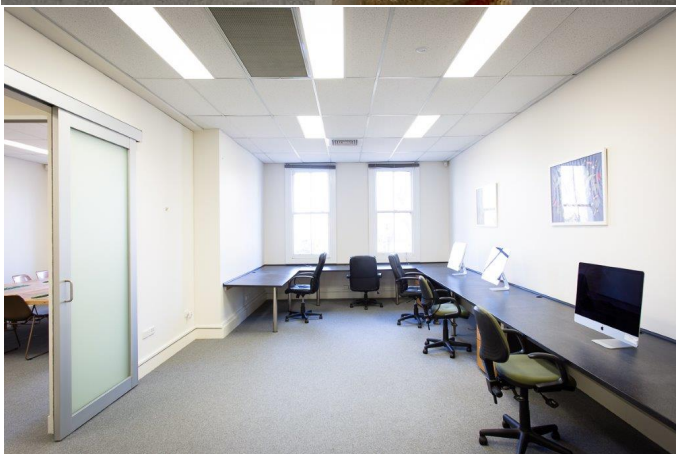
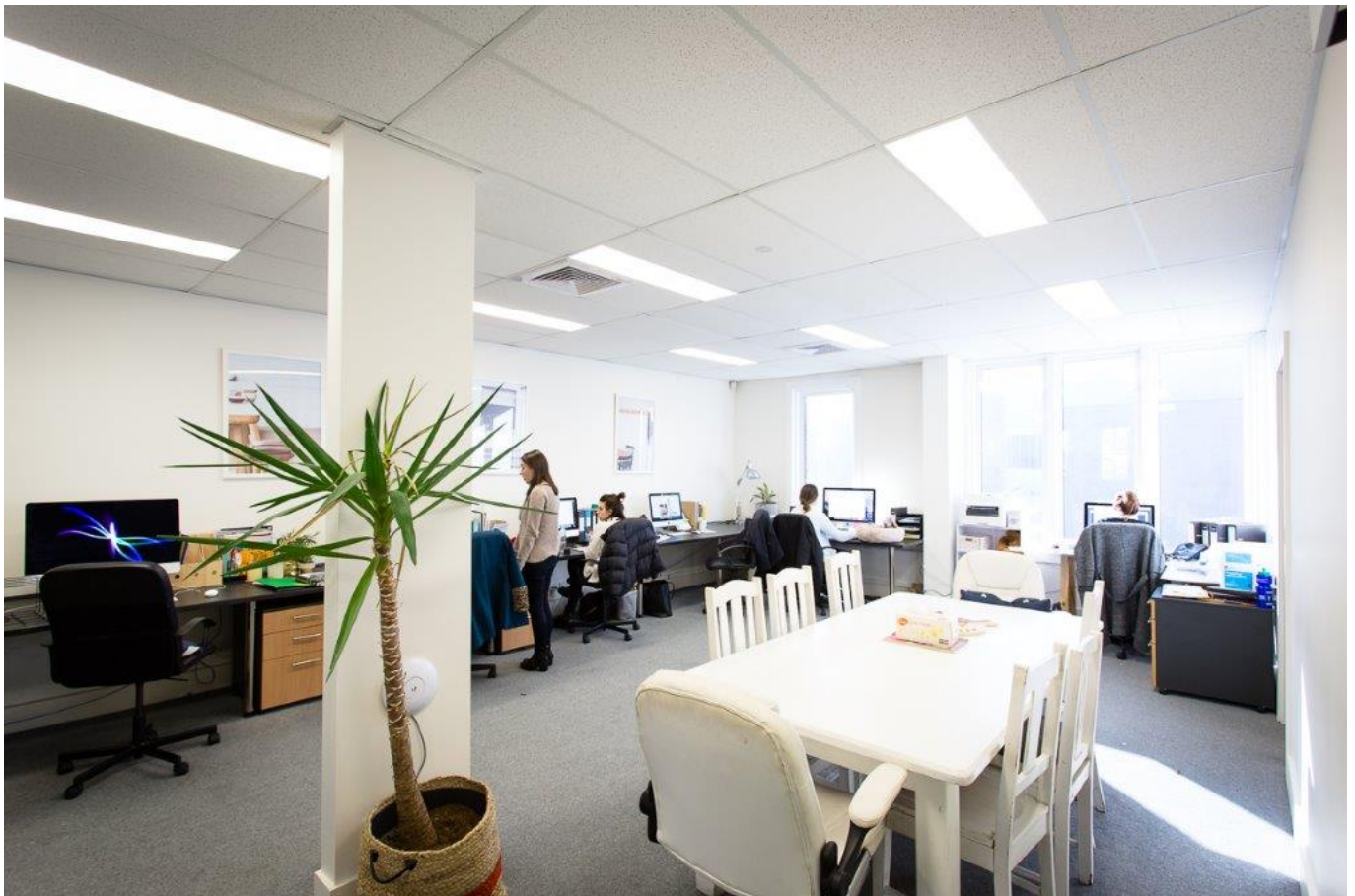




Leased

# 143-145 Victoria Parade, Collingwood VIC



## MODERN OFFICE WITH PARKING

Seize the day with this light, bright and airy modern office on Melbourne's premier tree-lined boulevard, Victoria Parade. In close proximity to trains, trams, meter-parking, Bunnings Collingwood and the Smeg showroom, this well-appointed commercial premises also has the added advantage of on-site parking and rear access.

Features include:

- > Excellent natural light
- > Air-conditioning & heating
- > Very recently refurbished, in excellent condition
- > Data cabling
- > Meeting room (with window views) & open-plan areas
- > Rear roller-door access to boutique warehouse space
- > Security system
- > Abundant on-site parking (4)
- > AREA: 262m<sup>2</sup>

**Contract type**

Lease

---

**Property Type**

Offices, Commercial

---

**Price**

CONTACT AGENT

---

**Richard Miglic**  
**Owner Principal**

0418 556 900

---