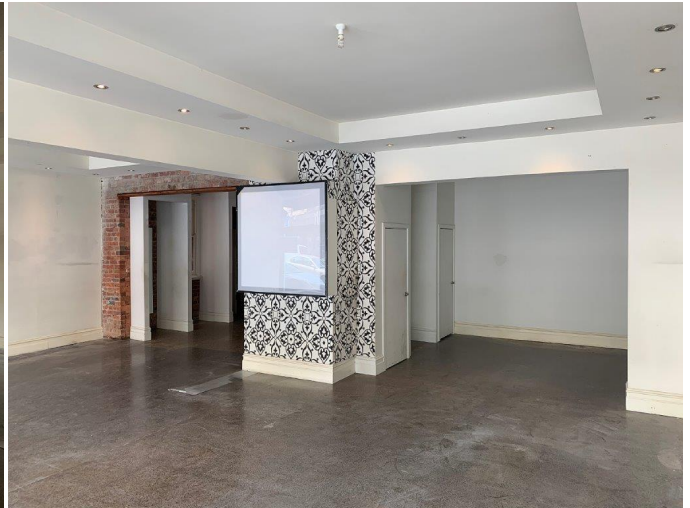




For Lease

306-308 Brunswick Street, Fitzroy VIC





RETAIL OPPORTUNITY - HEART OF BRUNSWICK STREET

This brilliantly located double-shopfront presents an unparalleled opportunity to plant your business firmly within Fitzroy's tightly-held retail landscape, and right in the very heart of Brunswick Street's retail & hospitality precinct.

Features include:

- > Great natural light
- > Wide frontage (10m approximately)
- > Excellent exposure for your business
- > Concrete shop floor
- > Ample amenities
- > Rear access and on-site parking
- > GROUND FLOOR: 120m² (approximately)
- > STORAGE: 60m² (approximately)
- > Available: NOW

For further information or to arrange an inspection please contact exclusive agents at MIGLIC DEAN:

Richard Miglic
m: 0418 556 900
e: richard@miglicdean.com.au

Contract type

Lease

Property Type

Retail, Commercial

Price

10m of street frontage

Richard Miglic
Owner Principal

0418 556 900
